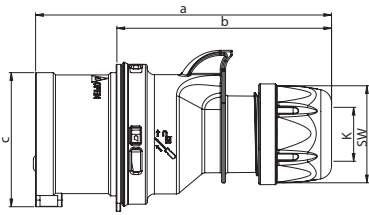


Event technology MIDNIGHT-SERIES

Shark Plug

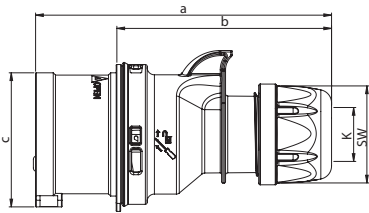


| Poles | 16 Amp | | | 32 Amp | | |
|----------------------------------|----------------|------|------|---------|---------|---------|
| | 3 | 4 | 5 | 3 | 4 | 5 |
| a | 122 | 128 | 134 | 150 | 150 | 155 |
| b | 86 | 92 | 98 | 104 | 104 | 109 |
| c | 47 | 53 | 61 | 63 | 63 | 70 |
| K_cable Ø [mm] | 6-15 | 6-15 | 8-16 | 11,5-20 | 11,5-20 | 11,5-22 |
| Connection type: | Screw terminal | | | | | |
| Wire flexible [mm ²] | 1-2,5 | | | 2,5-6 | | |
| Contact screws [Ncm] | 100 Ncm | | | 110 Ncm | | |
| SW | 42 | 42 | 42 | 50 | 50 | 50 |
| Weight [g] | 109 | 128 | 151 | 181 | 201 | 232 |

- with screw terminals
- housing material: PA6
- contacts: brass
 - to order nickel-plated contacts please add a "v" e.g. 015-6xv

IP44 splashproof

Turbo Shark Plug

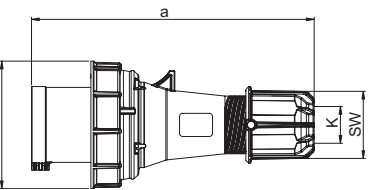


| Poles | 16 Amp | | | 32 Amp | | |
|----------------------------------|--------------------|------|------|---------|---------|---------|
| | 3 | 4 | 5 | 3 | 4 | 5 |
| a | 122 | 128 | 134 | 150 | 150 | 155 |
| b | 86 | 92 | 98 | 104 | 104 | 109 |
| c | 47 | 53 | 61 | 63 | 63 | 70 |
| K_cable Ø [mm] | 6-15 | 6-15 | 8-16 | 11,5-20 | 11,5-20 | 11,5-22 |
| Connection type: | Screwless terminal | | | | | |
| Wire flexible [mm ²] | 1-2,5 | | | 2,5-6 | | |
| SW | 42 | 42 | 42 | 50 | 50 | 50 |
| Weight [g] | 111 | 132 | 156 | 186 | 206 | 241 |

- screwless connection technology
- housing material: PA6
- contacts: brass
 - to order nickel-plated contacts please add a "v" e.g. 015-6TTxv

IP44 splashproof

Power Twist Plug

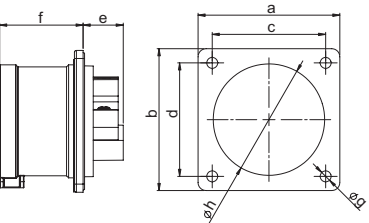


| Poles | 63 Amp | | | 125 Amp | | |
|----------------------------------|---------------------------|---------|---------|---------|---------|---------|
| | 3 | 4 | 5 | 3 | 4 | 5 |
| a | 257 | 257 | 257 | 270 | 270 | 270 |
| b | 114 | 114 | 114 | 131 | 131 | 131 |
| K_cable Ø [mm] | 14,5-36 | 14,5-36 | 14,5-36 | 22,5-50 | 22,5-50 | 22,5-50 |
| Connection type: | Contact frame with screws | | | | | |
| Wire flexible [mm ²] | 6-16 | | | 16-50 | | |
| Contact screws [Ncm] | 200 Ncm | | | 450 Ncm | | |
| SW | 61 | 61 | 61 | 81 | 81 | 81 |
| Weight [g] | 570 | 617 | 666 | 956 | 1064 | 1169 |

- Contact frame with screws (63A) for 125A with hexagon socket screws
- housing material: PA6
- contacts: nickel-plated contacts, with pilot contact (see page 9)

IP66/67 watertight

Flanged plug straight

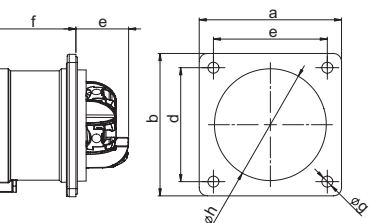


| Poles | 16 Amp | | | 32 Amp | | |
|----------------------------------|----------------|-----|-----|---------|-----|-----|
| | 3 | 4 | 5 | 3 | 4 | 5 |
| Flange | | | | | | |
| a x b | 70 | 70 | 70 | 70 | 70 | 70 |
| Fixing center | | | | | | |
| c x d | 56 | 56 | 56 | 56 | 56 | 56 |
| e | 21 | 21 | 20 | 21 | 21 | 21 |
| f | 42 | 42 | 42 | 51 | 51 | 51 |
| g | 5,5 | 5,5 | 5,5 | 5,5 | 5,5 | 5,5 |
| h | 43 | 43 | 55 | 55 | 55 | 55 |
| Connection type: | Screw terminal | | | | | |
| Wire flexible [mm ²] | 1-2,5 | | | 2,5-6 | | |
| solid [mm ²] | 1-4 | | | 2,5-10 | | |
| Contact screws [Ncm] | 100 Ncm | | | 110 Ncm | | |
| Weight [g] | 86 | 101 | 118 | 125 | 145 | 165 |

- with screw terminals
- housing material: PA6
- contacts: brass
 - to order nickel-plated contacts please add a "v" e.g. 615-6xv
- According to EN 60309: For correct use a locking device has to be provided (see page 32)

IP44 splashproof

Turbo Twist Flanged plug straight



| Poles | 16 Amp | | 32 Amp | |
|----------------------------------|--------------------|-----|--------|-----|
| | 3 | 5 | 4 | 5 |
| Flange | | | | |
| a x b | 70 | 70 | 70 | 70 |
| Fixing center | | | | |
| c x d | 56 | 56 | 56 | 56 |
| e | 26 | 26 | 29 | 29 |
| f | 42 | 42 | 51 | 51 |
| g | 5,5 | 5,5 | 5,5 | 5,5 |
| h | 43 | 55 | 55 | 55 |
| Connection type: | Screwless terminal | | | |
| Wire flexible [mm ²] | 1-2,5 | | 2,5-6 | |
| solid [mm ²] | 1-4 | | 2,5-10 | |
| Weight [g] | 899 | 122 | 151 | 172 |

- screwless connection technology
- housing material: PA6
- contacts: brass
 - to order nickel-plated contacts please add a "v" e.g. 615-6TTxv
- According to EN 60309: For correct use a locking device has to be provided (see page 32)

IP44 splashproof

230V~

50/60Hz
3p=6h
4p+5p=9h

400V~

50/60Hz
3p=9h
4p+5p=6h

| Amp. | Poles | pack. unit |
|------|-------|------------|
| 16 | 3 | 10 |
| 16 | 4 | 10 |
| 16 | 5 | 10 |
| 32 | 3 | 10 |
| 32 | 4 | 10 |
| 32 | 5 | 10 |

013-6x

014-6x
015-6x

023-6x

024-6x
025-6x



023-6x

| | | |
|----|---|----|
| 16 | 3 | 10 |
| 16 | 4 | 10 |
| 16 | 5 | 10 |
| 32 | 3 | 10 |
| 32 | 4 | 10 |
| 32 | 5 | 10 |

013-6TTx

014-6TTx
015-6TTx

023-6TTx

024-6TTx
025-6TTx



015-6TTx

| | | |
|-----|---|---|
| 63 | 3 | 2 |
| 63 | 4 | 2 |
| 63 | 5 | 2 |
| 125 | 3 | 2 |
| 125 | 4 | 2 |
| 125 | 5 | 2 |

033-6xs

034-6xs
035-6xs

043-6xs

044-6xs
045-6xs



035-6xs

with flange 70 x 70 - fixing center 56 x 56

| | | |
|----|---|----|
| 16 | 3 | 10 |
| 16 | 4 | 10 |
| 16 | 5 | 10 |
| 32 | 3 | 10 |
| 32 | 4 | 10 |
| 32 | 5 | 10 |

613-6x

614-6x
615-6x

623-6x

624-6x
625-6x



625-6x

with flange 70 x 70 - fixing center 56 x 56

| | | |
|----|---|----|
| 16 | 3 | 10 |
| 16 | 5 | 10 |
| 32 | 4 | 10 |
| 32 | 5 | 10 |

613-6TTx

615-6TTx

624-6TTx

625-6TTx



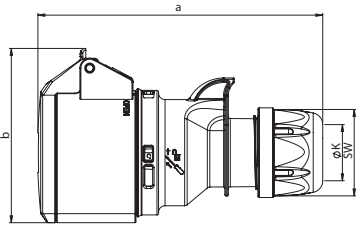
625-6TTx

Minimum order quantity: 50 pcs.



Event technology MIDNIGHT-SERIES

Shark Connector IP44

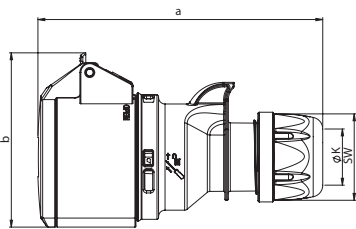


| | 16 Amp | | | 32 Amp | | |
|----------------------------------|----------------|------|------|---------|---------|---------|
| Poles | 3 | 4 | 5 | 3 | 4 | 5 |
| a | 133 | 138 | 145 | 161 | 161 | 168 |
| b | 76 | 80 | 89 | 91 | 94 | 100 |
| K_cable Ø [mm] | 6-15 | 6-15 | 8-16 | 11,5-20 | 11,5-20 | 11,5-22 |
| Connection type: | Screw terminal | | | | | |
| Wire flexible [mm ²] | 1-2,5 | | | 2,5-6 | | |
| Contact screws [Ncm] | 100 Ncm | | | 110 Ncm | | |
| SW | 42 | 42 | 42 | 50 | 50 | 50 |
| Weight [g] | 134 | 161 | 188 | 228 | 244 | 270 |

- with screw terminals
- housing material: PA6
- contacts: brass
 - to order nickel-plated contacts please add a "v" e.g. 215-6xv

IP44 splashproof

Turbo Shark Connector IP44

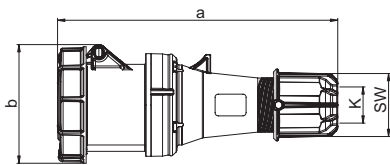


| | 16 Amp | | | 32 Amp | | |
|----------------------------------|--------------------|------|------|---------|---------|---------|
| Poles | 3 | 4 | 5 | 3 | 4 | 5 |
| a | 133 | 138 | 145 | 161 | 161 | 168 |
| b | 76 | 82 | 89 | 94 | 94 | 100 |
| K_cable Ø [mm] | 6-15 | 6-15 | 8-16 | 11,5-20 | 11,5-20 | 11,5-22 |
| Connection type: | Screwless terminal | | | | | |
| Wire flexible [mm ²] | 1-2,5 | | | 2,5-6 | | |
| SW | 42 | 42 | 42 | 50 | 50 | 50 |
| Weight [g] | 136 | 161 | 193 | 228 | 243 | 271 |

- screwless connection technology
- housing material: PA6
- contacts: brass
 - to order nickel-plated contacts please add a "v" e.g. 215-6TTxv

IP44 splashproof

Power Twist Connector IP66/67

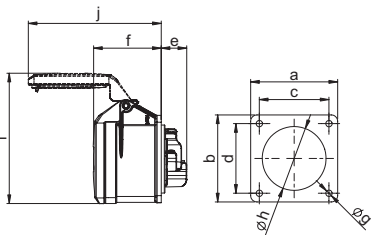


| | 63 Amp | | | 125 Amp | | |
|----------------------------------|---------------------------|---------|---------|---------|---------|---------|
| Poles | 3 | 4 | 5 | 3 | 4 | 5 |
| a | 269 | 269 | 269 | 287 | 287 | 287 |
| b | 114 | 114 | 114 | 124 | 124 | 124 |
| K_cable Ø [mm] | 14,5-36 | 14,5-36 | 14,5-36 | 22,5-50 | 22,5-50 | 22,5-50 |
| Connection type: | Contact frame with screws | | | | | |
| Wire flexible [mm ²] | 6-16 | | | 16-50 | | |
| Contact screws [Ncm] | 200 Ncm | | | 450 Ncm | | |
| SW | 61 | 61 | 61 | 81 | 81 | 81 |
| Weight [g] | 669 | 710 | 768 | 1060 | 1167 | 1266 |

- Contact frame with screws for 125A with hexagon socket screws
- housing material: PC/ABS
- contacts: brass with lamellar contact CuBe
 - to order with pilot contact please add a „5“ e.g. 2335-6xs (see page 10)
 - to order with pilot contact system (PCS) please add a „6“ e.g. 2336-6xs (see page 10)

IP66/67 watertight

Flanged socket straight IP44

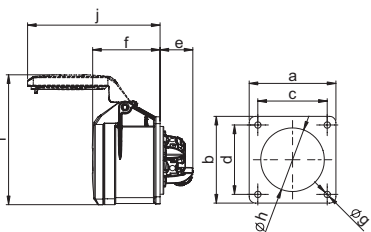


| | 16 Amp | | | 32 Amp | | |
|----------------------------------|----------------|-----|-----|---------|-----|-----|
| Poles | 3 | 4 | 5 | 3 | 4 | 5 |
| Flange a x b | 70 | 70 | 70 | 70 | 70 | 70 |
| Fixing center c x d | 56 | 56 | 56 | 56 | 56 | 56 |
| e | 21 | 21 | 21 | 23 | 23 | 23 |
| f | 55 | 55 | 55 | 67 | 67 | 67 |
| g | 5,5 | 5,5 | 5,5 | 5,5 | 5,5 | 5,5 |
| h | 43 | 45 | 55 | 55 | 55 | 58 |
| i | 87 | 101 | 105 | 112 | 112 | 108 |
| j | 101 | 101 | 107 | 122 | 122 | 136 |
| Connection type: | Screw terminal | | | | | |
| Wire flexible [mm ²] | 1-2,5 | | | 2,5-6 | | |
| solid [mm ²] | 1-4 | | | 2,5-10 | | |
| Contact screws [Ncm] | 100 Ncm | | | 110 Ncm | | |
| Weight [g] | 115 | 127 | 141 | 162 | 178 | 206 |

- with screw terminals
- housing material: PA6
- contacts: brass
 - to order nickel-plated contacts please add a "v" e.g. 315-6xv

IP44 splashproof
IP44/54 16/3; 16/5 and 32/5 are splash- and dustproof

Turbo Twist Flanged socket straight IP44



| | 16 Amp | | | 32 Amp | | |
|----------------------------------|--------------------|-----|-----|--------|-----|-----|
| Poles | 3 | 4 | 5 | 3 | 4 | 5 |
| Flange a x b | 70 | 70 | 70 | 70 | 70 | 70 |
| Fixing center c x d | 56 | 56 | 56 | 56 | 56 | 56 |
| e | 27 | 27 | 27 | 27 | 27 | 27 |
| f | 55 | 55 | 55 | 67 | 67 | 67 |
| g | 5,5 | 5,5 | 5,5 | 5,5 | 5,5 | 5,5 |
| h | 43 | 45 | 55 | 55 | 55 | 58 |
| i | 87 | 101 | 105 | 112 | 112 | 108 |
| j | 101 | 101 | 107 | 122 | 122 | 136 |
| Connection type: | Screwless terminal | | | | | |
| Wire flexible [mm ²] | 1-2,5 | | | 2,5-6 | | |
| solid [mm ²] | 1-4 | | | 2,5-10 | | |
| Weight [g] | 117 | 128 | 146 | 161 | 178 | 207 |

- screwless connection technology
- housing material: PA6
- contacts: brass
 - to order nickel-plated contacts please add a "v" e.g. 315-6TTxv

IP44 splashproof
IP44/54 16/3; 16/5 and 32/5 are splash- and dustproof

230V~

50/60Hz
3p=6h
4p+5p=9h

400V~

50/60Hz
3p=9h
4p+5p=6h

| Amp. | Poles | pack. unit |
|------|-------|------------|
| 16 | 3 | 10 |
| 16 | 4 | 10 |
| 16 | 5 | 10 |
| 32 | 3 | 10 |
| 32 | 4 | 10 |
| 32 | 5 | 10 |

Cat.No.

Cat.No.

213-6x

214-6x
215-6x

223-6x

224-6x
225-6x



223-6x

| | | |
|----|---|----|
| 16 | 3 | 10 |
| 16 | 4 | 10 |
| 16 | 5 | 10 |
| 32 | 3 | 10 |
| 32 | 4 | 10 |
| 32 | 5 | 10 |

213-6TTx

214-6TTx
215-6TTx

223-6TTx

224-6TTx
225-6TTx



215-6TTx

| | | |
|-----|---|---|
| 63 | 3 | 2 |
| 63 | 4 | 2 |
| 63 | 5 | 2 |
| 125 | 3 | 2 |
| 125 | 4 | 2 |
| 125 | 5 | 2 |

233-6xs

234-6xs
235-6xs

243-6xs

244-6xs
245-6xs



235-6xs

| with flange 70 x 70 - fixing center 56 x 56 | | |
|---|---|----|
| 16 | 3 | 10 |
| 16 | 4 | 10 |
| 16 | 5 | 10 |
| 32 | 3 | 10 |
| 32 | 4 | 10 |
| 32 | 5 | 10 |

313-6x

314-6x
315-6x

323-6x

324-6x
325-6x



315-6x

| with flange 70 x 70 - fixing center 56 x 56 | | |
|---|---|----|
| 16 | 3 | 10 |
| 16 | 4 | 10 |
| 16 | 5 | 10 |
| 32 | 3 | 10 |
| 32 | 4 | 10 |
| 32 | 5 | 10 |

313-6TTx

314-6TTx
315-6TTx

323-6TTx

324-6TTx
325-6TTx

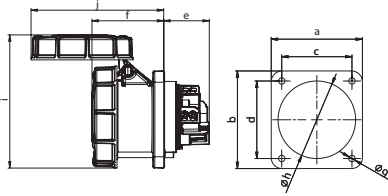


313-6TTx

Minimum order quantity: 50 pcs.



Event technology MIDNIGHT-SERIES

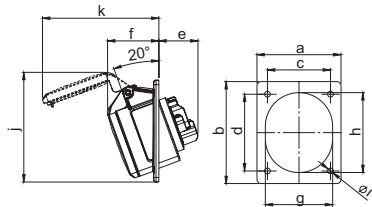


Power Twist Flanged socket straight 66/67

| Poles | 63 Amp | | | 125 Amp | | |
|--|--------|-----|-----|---------|-----|-----|
| | 3 | 4 | 5 | 3 | 4 | 5 |
| a | 100 | 100 | 100 | 120 | 120 | 120 |
| b | 100 | 100 | 100 | 100 | 100 | 100 |
| c | 80 | 80 | 80 | 48 | 48 | 48 |
| d | 80 | 80 | 80 | 101 | 101 | 101 |
| e | 50 | 50 | 50 | 8 | 8 | 8 |
| f | 80 | 80 | 80 | 90 | 90 | 90 |
| g | 7 | 7 | 7 | 159 | 159 | 159 |
| h | 85 | 85 | 85 | 179 | 179 | 179 |
| i | 147 | 147 | 147 | 147 | 147 | 147 |
| j | 146 | 146 | 146 | 146 | 146 | 146 |
| Connection type: Contact frame with screws | | | | | | |
| Wire flexible [mm ²] | | | | | | |
| solid [mm ²] | | | | | | |
| Contact screws [Ncm] | | | | | | |
| Weight [g] | | | | | | |

- Contact frame with screws (63A) for 125A with hexagon socket screws
- housing material: PA6
- contacts: brass with lamellar contact CuBe
 - to order with pilot contact please add a „5“ e.g. 3335-6xs (see page 10)
 - to order with pilot contact system (PCS) please add a „6“ e.g. 3336-6xs (see page 10)

IP66/67 watertight

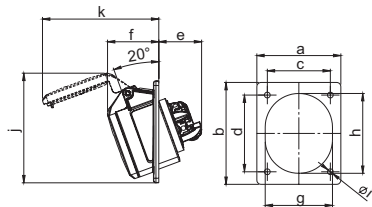


Flanged socket sloping IP44

| Poles | 16 Amp | | | 32 Amp | | |
|----------------------------------|--------|-----|-----|--------|-----|-----|
| | 3 | 4 | 5 | 3 | 4 | 5 |
| a | 80 | 80 | 80 | 80 | 80 | 80 |
| b | 97 | 97 | 97 | 97 | 97 | 97 |
| c | 60 | 60 | 60 | 60 | 60 | 60 |
| d | 73 | 73 | 73 | 73 | 73 | 73 |
| e | 38 | 38 | 38 | 48 | 48 | 48 |
| f | 47 | 47 | 49 | 54 | 54 | 55 |
| g | 51 | 56 | 65 | 65 | 65 | 70 |
| h | 61 | 67 | 76 | 75 | 75 | 80 |
| i | 5,5 | 5,5 | 5,5 | 5,5 | 5,5 | 5,5 |
| j | 97 | 103 | 105 | 105 | 105 | 99 |
| k | 99 | 104 | 111 | 119 | 119 | 130 |
| Connection type: Screw terminal | | | | | | |
| Wire flexible [mm ²] | | | | | | |
| solid [mm ²] | | | | | | |
| Contact screws [Ncm] | | | | | | |
| Weight [g] | | | | | | |

- with screw terminals
- housing material: PA6
- contacts: brass
 - to order nickel-plated contacts please add a "v" e.g. 415-6xv

IP44 splashproof
IP44/54 16/3; 16/5 and 32/5 are splash- and dustproof

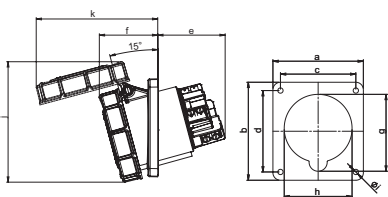


Turbo Twist Flanged socket sloping IP44

| Poles | 16 Amp | | | 32 Amp | | |
|-------------------------------------|--------|-----|-----|--------|-----|-----|
| | 3 | 4 | 5 | 3 | 4 | 5 |
| a | 80 | 80 | 80 | 80 | 80 | 80 |
| b | 97 | 97 | 97 | 97 | 97 | 97 |
| c | 60 | 60 | 60 | 60 | 60 | 60 |
| d | 73 | 73 | 73 | 73 | 73 | 73 |
| e | 41 | 41 | 41 | 48 | 48 | 48 |
| f | 47 | 47 | 49 | 54 | 54 | 55 |
| g | 51 | 56 | 65 | 65 | 65 | 70 |
| h | 61 | 67 | 76 | 75 | 75 | 80 |
| i | 5,5 | 5,5 | 5,5 | 5,5 | 5,5 | 5,5 |
| j | 97 | 103 | 105 | 105 | 105 | 99 |
| k | 99 | 104 | 111 | 119 | 119 | 130 |
| Connection type: Screwless terminal | | | | | | |
| Wire flexible [mm ²] | | | | | | |
| solid [mm ²] | | | | | | |
| Weight [g] | | | | | | |

- screwless connection technology
- housing material: PA6
- contacts: brass
 - to order nickel-plated contacts please add a "v" e.g. 415-6TTxv

IP44 splashproof
IP44/54 16/3; 16/5 and 32/5 are splash- and dustproof



Power Twist Flanged socket sloping IP67

| Poles | 63 Amp | | | 125 Amp | | |
|--|--------|-----|-----|---------|-----|-----|
| | 3 | 4 | 5 | 3 | 4 | 5 |
| a | 100 | 100 | 100 | 120 | 120 | 120 |
| b | 112 | 112 | 112 | 130 | 130 | 130 |
| c | 80 | 80 | 80 | 100 | 100 | 100 |
| d | 88 | 88 | 88 | 108 | 108 | 108 |
| e | 64 | 64 | 64 | 92 | 92 | 92 |
| f | 80 | 80 | 80 | 77 | 77 | 77 |
| g | 92 | 92 | 92 | 102 | 102 | 102 |
| h | 82 | 82 | 82 | 90 | 90 | 90 |
| i | 7 | 7 | 7 | 7 | 7 | 7 |
| j | 148 | 148 | 148 | 160 | 160 | 160 |
| k | 154 | 154 | 154 | 162 | 162 | 162 |
| l | 154 | 154 | 154 | 162 | 162 | 162 |
| Connection type: Contact frame with screws | | | | | | |
| Wire flexible [mm ²] | | | | | | |
| solid [mm ²] | | | | | | |
| Contact screws [Ncm] | | | | | | |
| Weight [g] | | | | | | |

- Contact frame with screws (63A) for 125A with hexagon socket screws
- housing material: PA6
- contacts: brass with lamellar contact CuBe
 - to order with pilot contact please add a „5“ e.g. 4335-6xs (see page 9)
 - to order with pilot contact system (PCS) please add a „6“ e.g. 4336-6xs (see page 10)

IP67 watertight

230V~

50/60Hz
3p=6h
4p+5p=9h

400V~

50/60Hz
3p=9h
4p+5p=6h

| Amp. | Poles | pack. unit | Cat.No. | Cat.No. |
|---|-------|------------|---------|---------|
| with flange 100 x 100 - fixing center 80 x 80 | | | | |
| 63 | 3 | 2 | 333-6xs | |
| 63 | 4 | 2 | | 334-6xs |
| 63 | 5 | 2 | | 335-6xs |
| with flange 120 x 120 - fixing center 100 x 100 | | | | |
| 125 | 3 | 2 | 343-6xs | |
| 125 | 4 | 2 | | 344-6xs |
| 125 | 5 | 2 | | 345-6xs |



335-6xs

| | | | | |
|---|---|----|----------|----------|
| with flange 80 x 97 - fixing center 60 x 73 | | | | |
| 16 | 3 | 10 | 413-6f8x | |
| 16 | 4 | 10 | | 414-6f8x |
| 16 | 5 | 10 | | 415-6x |
| | | | | |
| 32 | 3 | 10 | 423-6x | |
| 32 | 4 | 10 | | 424-6x |
| 32 | 5 | 10 | | 425-6x |



415-6x

| | | | | |
|---|---|----|------------|------------|
| with flange 80 x 97 - fixing center 60 x 73 | | | | |
| 16 | 3 | 10 | 413-6TTf8x | |
| 16 | 4 | 10 | | 414-6TTf8x |
| 16 | 5 | 10 | | 415-6TTx |
| | | | | |
| 32 | 3 | 10 | 423-6TTx | |
| 32 | 4 | 10 | | 424-6TTx |
| 32 | 5 | 10 | | 425-6TTx |

**TURBO
TWIST
click**



415-6TTx

| | | | | |
|---|---|---|---------|---------|
| with flange 100 x 112 - fixing center 80 x 88 | | | | |
| 63 | 3 | 2 | 433-6xs | |
| 63 | 4 | 2 | | 434-6xs |
| 63 | 5 | 2 | | 435-6xs |
| with flange 120 x 130 - fixing center 100 x 108 | | | | |
| 125 | 3 | 2 | 443-6xs | |
| 125 | 4 | 2 | | 444-6xs |
| 125 | 5 | 2 | | 445-6xs |



435-6xs

