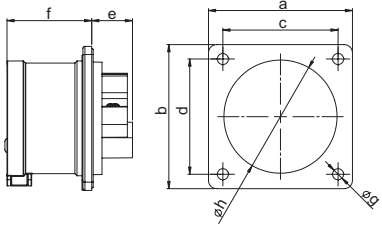


Flanged plugs

Flanged plug straight IP44

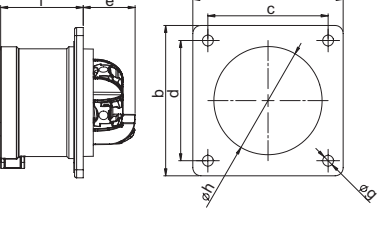


	16 Amp			32 Amp		
	3	4	5	3	4	5
Poles	3	4	5	3	4	5
Flange						
a x b	70	70	70	70	70	70
Fixing center						
c x d	56	56	56	56	56	56
e	21	21	20	21	21	21
f	42	42	42	51	51	51
g	5,5	5,5	5,5	5,5	5,5	5,5
h	43	43	55	55	55	55
Connection type:	Screw terminal					
Wire flexible [mm ²]	1-2,5			2,5-6		
solid [mm ²]	1-4			2,5-10		
Contact screws [Ncm]	100 Ncm			110 Ncm		
Weight [g]	86	101	118	125	145	165

- with screw terminals
- housing material: PA6
- contacts: brass
 - to order nickel-plated contacts please add a "v" e.g. 615-6v
- According to EN 60309: For correct use a locking device has to be provided (see page 32)

IP44 splashproof

Turbo Twist Flanged plug straight IP44

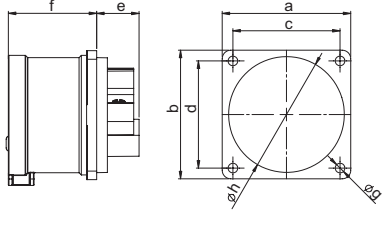


	16 Amp		32 Amp	
	3	5	4	5
Poles	3	5	4	5
Flange				
a x b	70	70	70	70
Fixing center				
c x d	56	56	56	56
e	26	26	29	29
f	42	42	51	51
g	5,5	5,5	5,5	5,5
h	43	55	55	55
Connection type:	Screwless terminal			
Wire flexible [mm ²]	1-2,5		2,5-6	
solid [mm ²]	1-4		2,5-10	
Weight [g]	89	122	151	172

- screwless connection technology
- housing material: PA6
- contacts: brass
 - to order nickel-plated contacts please add a "v" e.g. 615-6TTv
- According to EN 60309: For correct use a locking device has to be provided (see page 32)

IP44 splashproof

Flanged plug straight IP44

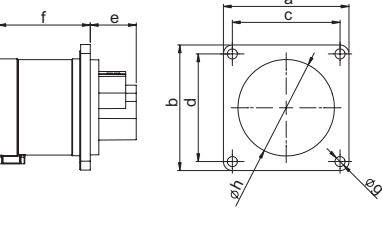


	16 Amp		
	3	4	5
Poles	3	4	5
Flange			
a x b	60	60	60
Fixing center			
c x d	50	50	50
e	21	21	20
f	42	42	42
g	4,5	4,5	4,5
h	43	43	55
Connection type:	Screw terminal		
Wire flexible [mm ²]	1-2,5		
solid [mm ²]	1-4		
Contact screws [Ncm]	100 Ncm		
Weight [g]	78	93	109

- with screw terminals
- housing material: PA6
- contacts: brass
 - to order nickel-plated contacts please add a "v" e.g. 615-6f6v
- According to EN 60309: For correct use a locking device has to be provided (see page 32)

IP44 splashproof

Flanged plug straight IP44



	16 Amp	
	3	4
Poles	3	4
Flange		
a x b	56	56
Fixing center		
c x d	48	48
e	21	21
f	42	42
g	4,5	4,5
h	43	43
Connection type:	Screw terminal	
Wire flexible [mm ²]	1-2,5	
solid [mm ²]	1-4	
Contact screws [Ncm]	100 Ncm	
Weight [g]	76	91

- with screw terminals
- housing material: PA6
- contacts: brass
 - to order nickel-plated contacts please add a "v" e.g. 615-6f3v
- According to EN 60309: For correct use a locking device has to be provided (see page 32)

IP44 splashproof

110V~ 50/60Hz 4h	230V~ 50/60Hz 3p=6h 4p+5p=9h	400V~ 50/60Hz 3p=9h 4p+5p=6h	500V~ 50/60Hz 7h	>50-500V~ 100-300Hz 10h	>50-500V~ 301-500Hz 2h
Cat.No.	Cat.No.	Cat.No.	Cat.No.	Cat.No.	Cat.No.

Amp.
Poles
pack. unit

			Cat.No.	Cat.No.	Cat.No.	Cat.No.	Cat.No.	Cat.No.
flange 70 x 70 - fixing center 56 x 56								
16	3	10	613-4	613-6	613-9	613-7	613-10	613-2
16	4	10	614-4	614-9	614-6	614-7	614-10	614-2
16	5	10	615-4	615-9	615-6	615-7	615-10	615-2
32	3	10	623-4	623-6	623-9	623-7	623-10	623-2
32	4	10	624-4	624-9	624-6	624-7	624-10	624-2
32	5	10	625-4	625-9	625-6	625-7	625-10	625-2



625-6

			Cat.No.	Cat.No.	Cat.No.
flange 70 x 70 - fixing center 56 x 56					
16	3	10	613-4TT	613-6TT	613-9TT
16	5	10	615-4TT	615-9TT	615-6TT
32	4	10	624-4TT	624-9TT	624-6TT
32	5	10	625-4TT	625-9TT	625-6TT



613-4TT

			Cat.No.	Cat.No.	Cat.No.	Cat.No.	Cat.No.	Cat.No.
flange 60 x 60 - fixing center 50 x 50								
16	3	10	613-4f6	613-6f6	613-9f6	613-7f6	613-10f6	613-2f6
16	4	10	614-4f6	614-9f6	614-6f6	614-7f6	614-10f6	614-2f6
16	5	10	615-4f6	615-9f6	615-6f6	615-7f6	615-10f6	615-2f6



613-6f6

			Cat.No.	Cat.No.	Cat.No.	Cat.No.	Cat.No.	Cat.No.
flange 56 x 56 - fixing center 48 x 48								
16	3	10	613-4f3	613-6f3	613-9f3	613-7f3	613-10f3	613-2f3
16	4	10	614-4f3	614-9f3	614-6f3	614-7f3	614-10f3	614-2f3

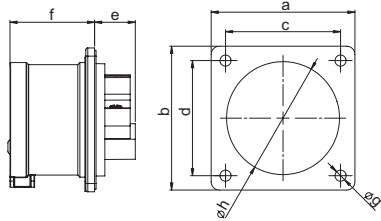


614-6f3

-
-
-
-
-
-
-
-
-

Flanged plugs

Flanged plug straight IP44

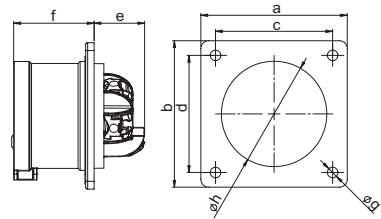


	16 Amp	32 Amp
Poles	5	5
Flange		
a x b	75	75
Fixing center		
c x d	60	60
e	20	21
f	42	51
g	5,5	5,5
h	55	55
Connection type:	Screw terminal	
Wire flexible [mm ²]	1-2,5	2,5-6
solid [mm ²]	1-4	2,5-10
Contact screws [Ncm]	100 Ncm	110 Ncm
Weight [g]	121	170

- with screw terminals
- housing material: PA6
- contacts: brass
 - to order nickel-plated contacts please add a "v" e.g. 615-6f7v
- According to EN 60309: For correct use a locking device has to be provided (see page 32)

IP44 splashproof

Turbo Twist Flanged plug straight IP44

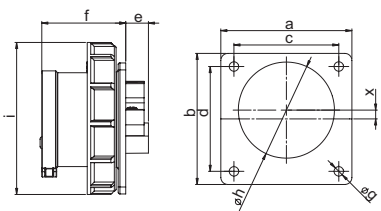


	16 Amp	32 Amp
Poles	5	5
Flange		
a x b	75	75
Fixing center		
c x d	60	60
e	26	29
f	42	51
g	5,5	5,5
h	55	55
Connection type:	Screwless terminal	
Wire flexible [mm ²]	1-2,5	2,5-6
solid [mm ²]	1-4	2,5-10
Weight [g]	126	178

- screwless connection technology
- housing material: PA6
- contacts: brass
 - to order nickel-plated contacts please add a "v" e.g. 615-6TTf7v
- According to EN 60309: For correct use a locking device has to be provided (see page 32)

IP44 splashproof

Flanged plug straight IP67

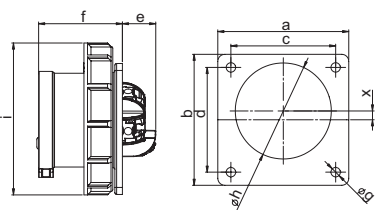


	16 Amp			32 Amp		
	3	4	5	3	4	5
Poles						
Flange						
a x b	75	75	75	75	75	75
Fixing center						
c x d	60	60	60	60	60	60
e	15	14	13	14	15	14
f	48	48	48	58	58	58
g	5,5	5,5	5,5	5,5	5,5	5,5
h	43	44	55	55	55	55
i	71	79	87	93	93	100
x	11,3	6	5	4,5	4,5	0
Connection type:	Screw terminal					
Wire flexible [mm ²]	1-2,5			2,5-6		
solid [mm ²]	1-4			2,5-10		
Contact screws [Ncm]	100 Ncm			110 Ncm		
Weight [g]	109	131	150	167	188	214

- with screw terminals
- housing material: PA6
- contacts: brass
 - to order nickel-plated contacts please add a "v" e.g. 6152-6v
- According to EN 60309: For correct use a locking device has to be provided (see page 32)
- for 16A 3p till 32A 4p the plug is placed off centered for keeping the standards

IP67 watertight

Turbo Twist Flanged plug straight IP67



	16 Amp		32 Amp	
	3	5	4	5
Poles				
Flange				
a x b	75	75	75	75
Fixing center				
c x d	60	60	60	60
e	20	20	21	21
f	48	48	58	58
g	5,5	5,5	5,5	5,5
h	43	55	55	55
i	71	87	93	100
x	11,3	5	4,5	0
Connection type:	Screwless terminal			
Wire flexible [mm ²]	1-2,5		2,5-6	
solid [mm ²]	1-4		2,5-10	
Weight [g]	111	154	194	222

- screwless connection technology
- housing material: PA6
- contacts: brass
 - to order nickel-plated contacts please add a "v" e.g. 6152-6tv
- According to EN 60309: For correct use a locking device has to be provided (see page 32)
- for 16A 3p and 32A 4p the plug is placed off centered for keeping the standards

IP67 watertight

Amp.	Poles	pack. unit	110V~ 50/60Hz 4h	230V~ 50/60Hz 3p=6h 4p+5p=9h	400V~ 50/60Hz 3p=9h 4p+5p=6h	500V~ 50/60Hz 7h	>50- 500V~ 100-300Hz 10h	>50- 500V~ 301-500Hz 2h
			Cat.No.	Cat.No.	Cat.No.	Cat.No.	Cat.No.	Cat.No.

flange 75 x 75 - fixing center 60 x 60								
16	5	10	615-4f7	615-9f7	615-6f7	615-7f7	615-10f7	615-2f7
32	5	10	625-4f7	625-9f7	625-6f7	625-7f7	625-10f7	625-2f7



615-6f7

flange 75 x 75 - fixing center 60 x 60					
16	5	10	615-4TTf7	615-9TTf7	615-6TTf7
32	5	10	625-4TTf7	625-9TTf7	625-6TTf7



615-6TTf7

flange 75 x 75 - fixing center 60 x 60								
16	3	10	6132-4	6132-6	6132-9	6132-7	6132-10	6132-2
16	4	10	6142-4	6142-9	6142-6	6142-7	6142-10	6142-2
16	5	10	6152-4	6152-9	6152-6	6152-7	6152-10	6152-2
32	3	10	6232-4	6232-6	6232-9	6232-7	6232-10	6232-2
32	4	10	6242-4	6242-9	6242-6	6242-7	6242-10	6242-2
32	5	10	6252-4	6252-9	6252-6	6252-7	6252-10	6252-2



6152-6

flange 75 x 75 - fixing center 60 x 60					
16	3	10	6132-4TT	6132-6TT	6132-9TT
16	5	10	6152-4TT	6152-9TT	6152-6TT
32	4	10	6242-4TT	6242-9TT	6242-6TT
32	5	10	6252-4TT	6252-9TT	6252-6TT



6252-6TT

-
-
-
-
-
-
-
-
-
-
-