

Flanged sockets straight

Flanged socket straight IP44

	16 Amp			32 Amp		
	3	4	5	3	4	5
Poles	3	4	5	3	4	5
Flange a x b	75	75	75	75	75	75
Fixing center c x d	60	60	60	60	60	60
e	21	21	21	23	23	23
f	55	55	55	67	67	67
g	5,5	5,5	5,5	5,5	5,5	5,5
h	43	45	55	55	55	58
i	89	104	107	112	112	108
j	101	101	107	122	122	136
Connection type:	Screw terminal					
Wire flexible [mm ²]	1-2,5			2,5-6		
solid [mm ²]	1-4			2,5-10		
Contact screws [Ncm]	100 Ncm			110 Ncm		
Weight [g]	120	132	150	167	182	210

- with screw terminals
- housing material: PA6
- contacts: brass
 - to order nickel-plated contacts please add a "v" e.g. 315-6f7v

IP44 splashproof
IP44/54 16/3 and 32/3 are splash- and dustproof

Turbo Twist Flanged socket straight IP44

	16 Amp			32 Amp		
	3	4	5	3	4	5
Poles	3	4	5	3	4	5
Flange a x b	75	75	75	75	75	75
Fixing center c x d	60	60	60	60	60	60
e	27	27	27	27	27	27
f	55	55	55	67	67	67
g	5,5	5,5	5,5	5,5	5,5	5,5
h	43	45	55	55	55	58
i	89	104	107	112	112	108
j	101	101	107	122	122	136
Connection type:	Screwless terminal					
Wire flexible [mm ²]	1-2,5			2,5-6		
solid [mm ²]	1-4			2,5-10		
Weight [g]	123	132	155	167	182	211

- screwless connection technology
- housing material: PA6
- contacts: brass
 - to order nickel-plated contacts please add a "v" e.g. 315-6TTf7v

IP44 splashproof
IP44/54 16/3; 16/5 and 32/5 are splash- and dustproof

Flanged socket straight IP67

	16 Amp			32 Amp		
	3	4	5	3	4	5
Poles	3	4	5	3	4	5
Flange a x b	75	75	75	75	75	75
Fixing center c x d	60	60	60	60	60	60
e	21	21	21	23	23	23
f	56	57	59	69	69	71
g	5,5	5,5	5,5	5,5	5,5	5,5
h	43	45	55	55	55	58
i	102	108	117	122	122	130
j	101	109	115	130	130	136
Connection type:	Screw terminal					
Wire flexible [mm ²]	1-2,5			2,5-6		
solid [mm ²]	1-4			2,5-10		
Contact screws [Ncm]	100 Ncm			110 Ncm		
Weight [g]	135	153	183	206	222	260

- with screw terminals
- housing material: PA6
- contacts: brass
 - to order nickel-plated contacts please add a "v" e.g. 3152-6v

IP67 watertight

Turbo Twist Flanged socket straight IP67

	16 Amp			32 Amp		
	3	4	5	3	4	5
Poles	3	4	5	3	4	5
Flange a x b	75	75	75	75	75	75
Fixing center c x d	60	60	60	60	60	60
e	27	27	27	27	27	27
f	56	57	59	69	69	71
g	5,5	5,5	5,5	5,5	5,5	5,5
h	43	45	55	55	55	58
i	102	108	117	122	122	130
j	101	109	115	130	130	136
Connection type:	Screwless terminal					
Wire flexible [mm ²]	1-2,5			2,5-6		
solid [mm ²]	1-4			2,5-10		
Weight [g]	137	153	188	206	222	261

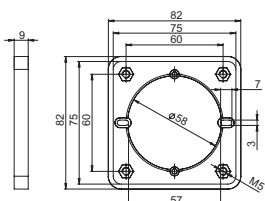
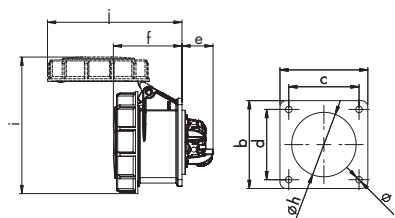
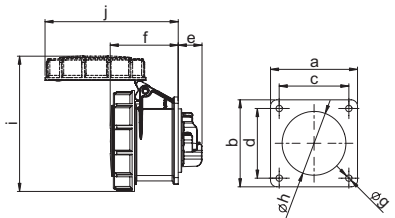
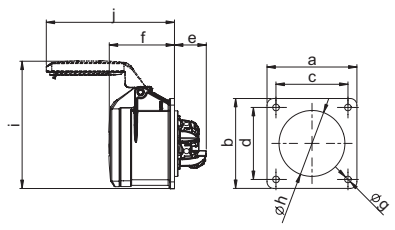
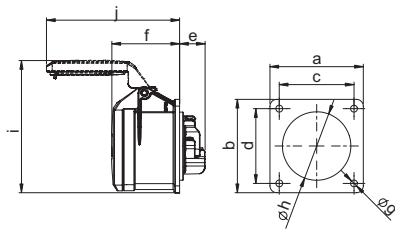
- screwless connection technology
- housing material: PA6
- contacts: brass
 - to order nickel-plated contacts please add a "v" e.g. 3152-6TTv

IP67 watertight

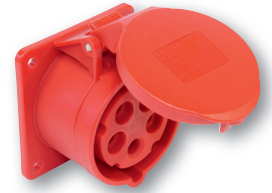
Cable conduit installation

	Intermediate flange for cable conduit installation
For CEE Flanged socket	
Flange	75x75 mm
Fixing center	60x60 mm
	Cat.No. 810-00

- suitable for CEE-flanged sockets with flange size 75x75 mm and fixing center 60x60 mm e.g. 315-6f7
- with intermediate flange, suitable for standard conduit mounting boxes



Amp.	Poles	pack unit	110V~	230V~	400V~	500V~	>50-500V~	>50-500V~
			50/60Hz 4h	50/60Hz 3p=6h 4p+5p=9h	50/60Hz 3p=9h 4p+5p=6h	50/60Hz 7h	100-300Hz 10h	301-500Hz 2h
			Cat.No.	Cat.No.	Cat.No.	Cat.No.	Cat.No.	Cat.No.
flange 75 x 75 - fixing center 60 x 60								
16	3	10	313-4f7	313-6f7	313-9f7	313-7f7	313-10f7	313-2f7
16	4	10	314-4f7	314-9f7	314-6f7	314-7f7	314-10f7	314-2f7
16	5	10	315-4f7	315-9f7	315-6f7	315-7f7	315-10f7	315-2f7
32	3	10	323-4f7	323-6f7	323-9f7	323-7f7	323-10f7	323-2f7
32	4	10	324-4f7	324-9f7	324-6f7	324-7f7	324-10f7	324-2f7
32	5	10	325-4f7	325-9f7	325-6f7	325-7f7	325-10f7	325-2f7



315-6f7

Amp.	Poles	pack unit	110V~	230V~	400V~	500V~	>50-500V~	>50-500V~
			50/60Hz 4h	50/60Hz 3p=6h 4p+5p=9h	50/60Hz 3p=9h 4p+5p=6h	50/60Hz 7h	100-300Hz 10h	301-500Hz 2h
			Cat.No.	Cat.No.	Cat.No.	Cat.No.	Cat.No.	Cat.No.
flange 75 x 75 - fixing center 60 x 60								
16	3	10	313-4TTf7	313-6TTf7	313-9TTf7			
16	4	10	314-4TTf7	314-9TTf7	314-6TTf7			
16	5	10	315-4TTf7	315-9TTf7	315-6TTf7			
32	3	10	323-4TTf7	323-6TTf7	323-9TTf7			
32	4	10	324-4TTf7	324-9TTf7	324-6TTf7			
32	5	10	325-4TTf7	325-9TTf7	325-6TTf7			



313-6TTf7

Amp.	Poles	pack unit	110V~	230V~	400V~	500V~	>50-500V~	>50-500V~
			50/60Hz 4h	50/60Hz 3p=6h 4p+5p=9h	50/60Hz 3p=9h 4p+5p=6h	50/60Hz 7h	100-300Hz 10h	301-500Hz 2h
			Cat.No.	Cat.No.	Cat.No.	Cat.No.	Cat.No.	Cat.No.
flange 75 x 75 - fixing center 60 x 60								
16	3	10	3132-4	3132-6	3132-9	3132-7	3132-10	3132-2
16	4	10	3142-4	3142-9	3142-6	3142-7	3142-10	3142-2
16	5	10	3152-4	3152-9	3152-6	3152-7	3152-10	3152-2
32	3	10	3232-4	3232-6	3232-9	3232-7	3232-10	3232-2
32	4	10	3242-4	3242-9	3242-6	3242-7	3242-10	3242-2
32	5	10	3252-4	3252-9	3252-6	3252-7	3252-10	3252-2



3152-6

Amp.	Poles	pack unit	110V~	230V~	400V~	500V~	>50-500V~	>50-500V~
			50/60Hz 4h	50/60Hz 3p=6h 4p+5p=9h	50/60Hz 3p=9h 4p+5p=6h	50/60Hz 7h	100-300Hz 10h	301-500Hz 2h
			Cat.No.	Cat.No.	Cat.No.	Cat.No.	Cat.No.	Cat.No.
flange 75 x 75 - fixing center 60 x 60								
16	3	10	3132-4TT	3132-6TT	3132-9TT			
16	4	10	3142-4TT	3142-9TT	3142-6TT			
16	5	10	3152-4TT	3152-9TT	3152-6TT			
32	3	10	3232-4TT	3232-6TT	3232-9TT			
32	4	10	3242-4TT	3242-9TT	3242-6TT			
32	5	10	3252-4TT	3252-9TT	3252-6TT			



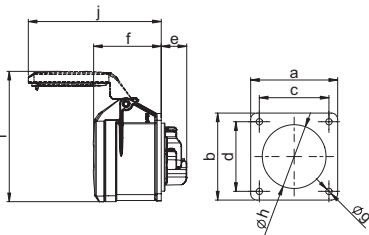
3132-6TT



Information icons: i, power, plug, fire, microphone, calculator, game controller, lightbulb, wheelchair, and hashtag #.

Flanged sockets straight

Flanged socket straight IP44

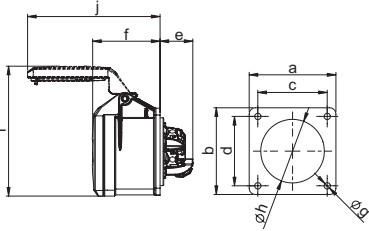


	16 Amp			32 Amp		
	3	4	5	3	4	5
Poles	3	4	5	3	4	5
Flange a x b	70	70	70	70	70	70
Fixing center c x d	56	56	56	56	56	56
e	21	21	21	23	23	23
f	55	55	55	67	67	67
g	5,5	5,5	5,5	5,5	5,5	5,5
h	43	45	55	55	55	58
i	87	101	105	112	112	108
j	101	101	107	122	122	136
Connection type: Screw terminal						
Wire flexible [mm ²]	1-2,5			2,5-6		
solid [mm ²]	1-4			2,5-10		
Contact screws [Ncm]	100 Ncm			110 Ncm		
Weight [g]	115	127	141	162	178	206

- with screw terminals
- housing material: PA6
- contacts: brass
 - to order nickel-plated contacts please add a "v" e.g. 315-6v

IP44 splashproof
IP44/54 16/3; 16/5 and 32/5 are splash- and dustproof

Turbo Twist Flanged socket straight IP44

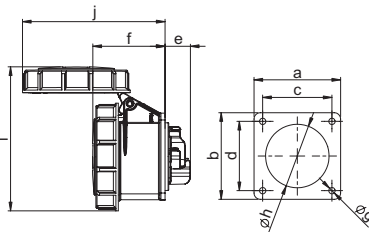


	16 Amp			32 Amp		
	3	4	5	3	4	5
Poles	3	4	5	3	4	5
Flange a x b	70	70	70	70	70	70
Fixing center c x d	56	56	56	56	56	56
e	27	27	27	27	27	27
f	55	55	55	67	67	67
g	5,5	5,5	5,5	5,5	5,5	5,5
h	43	45	55	55	55	58
i	87	101	105	112	112	108
j	101	101	107	122	122	136
Connection type: Screwless terminal						
Wire flexible [mm ²]	1-2,5			2,5-6		
solid [mm ²]	1-4			2,5-10		
Weight [g]	117	128	146	161	178	207

- screwless connection technology
- housing material: PA6
- contacts: brass
 - to order nickel-plated contacts please add a "v" e.g. 315-6TTv

IP44 splashproof
IP44/54 16/3; 16/5 and 32/5 are splash- and dustproof

Flanged socket straight IP67

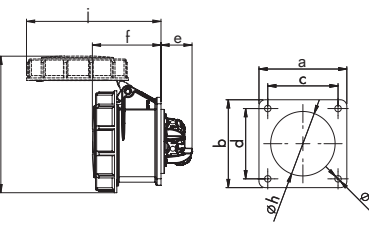


	16 Amp		32 Amp
	3	5	5
Poles	3	5	5
Flange a x b	70	70	70
Fixing center c x d	56	56	56
e	21	21	23
f	56	59	71
g	5,5	5,5	5,5
h	43	55	58
i	102	117	130
j	101	115	136
Connection type: Screw terminal			
Wire flexible [mm ²]	1-2,5		2,5-6
solid [mm ²]	1-4		2,5-10
Contact screws [Ncm]	100 Ncm		110 Ncm
Weight [g]	130	181	225

- with screw terminals
- housing material: PA6
- contacts: brass
 - to order nickel-plated contacts please add a "v" e.g. 3152-6f70v

IP67 watertight

Turbo Twist Flanged socket straight IP67



	16 Amp		32 Amp
	3	5	5
Poles	3	5	5
Flange a x b	70	70	70
Fixing center c x d	56	56	56
e	27	27	27
f	56	59	71
g	5,5	5,5	5,5
h	43	55	58
i	102	117	130
j	101	115	136
Connection type: Screwless terminal			
Wire flexible [mm ²]	1-2,5		2,5-6
solid [mm ²]	1-4		2,5-10
Weight [g]	132	186	227

- screwless connection technology
- housing material: PA6
- contacts: brass
 - to order nickel-plated contacts please add a "v" e.g. 3152-6TTf70v

IP67 watertight

Amp.	Poles	pack unit	110V~ 50/60Hz 4h	230V~ 50/60Hz 3p=6h 4p+5p=9h	400V~ 50/60Hz 3p=9h 4p+5p=6h	500V~ 50/60Hz 7h	>50- 500V~ 100-300Hz 10h	>50- 500V~ 301-500Hz 2h
			Cat.No.	Cat.No.	Cat.No.	Cat.No.	Cat.No.	Cat.No.

flange 70 x 70 - fixing center 56 x 56

16	3	10	313-4	313-6	313-9	313-7	313-10	313-2
16	4	10	314-4	314-9	314-6	314-7	314-10	314-2
16	5	10	315-4	315-9	315-6	315-7	315-10	315-2
32	3	10	323-4	323-6	323-9	323-7	323-10	323-2
32	4	10	324-4	324-9	324-6	324-7	324-10	324-2
32	5	10	325-4	325-9	325-6	325-7	325-10	325-2



315-6

flange 70 x 70 - fixing center 56 x 56

16	3	10	313-4TT	313-6TT	313-9TT			
16	4	10	314-4TT	314-9TT	314-6TT			
16	5	10	315-4TT	315-9TT	315-6TT			
32	3	10	323-4TT	323-6TT	323-9TT			
32	4	10	324-4TT	324-9TT	324-6TT			
32	5	10	325-4TT	325-9TT	325-6TT			

TURBO
TWIST
click



315-6TT

flange 70 x 70 - fixing center 56 x 56

16	3	10	3132-4f70	3132-6f70	3132-9f70	3132-7f70	3132-10f70	3132-2f70
16	5	10	3152-4f70	3152-9f70	3152-6f70	3152-7f70	3152-10f70	3152-2f70
32	5	10	3252-4f70	3252-9f70	3252-6f70	3252-7f70	3252-10f70	3252-2f70



3132-6f70

flange 70 x 70 - fixing center 56 x 56

16	3	10	3132-4TTf70	3132-6TTf70	3132-9TTf70	3132-7TTf70	3132-10TTf70	3132-2TTf70
16	5	10	3152-4TTf70	3152-9TTf70	3152-6TTf70	3152-7TTf70	3152-10TTf70	3152-2TTf70
32	5	10	3252-4TTf70	3252-9TTf70	3252-6TTf70	3252-7TTf70	3252-10TTf70	3252-2TTf70

TURBO
TWIST
click



3132-6ttf70

