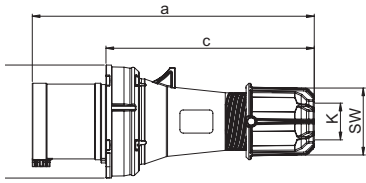


Plugs

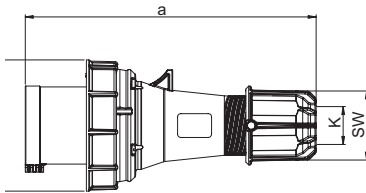


Power Twist Plug IP44

	63 Amp		
Poles	3	4	5
a	257	257	257
b	102	102	102
c	190	190	190
K_cable Ø [mm]	14,5-36	14,5-36	14,5-36
Connection type:	Contact frame with screws		
Wire flexible [mm ²]	6-16		
Contact screws [Ncm]	200 Ncm		
SW	61	61	61
Weight [g]	530	572	621

- contact frame with screws
- housing material: PA6
- contacts: nickel-plated contacts with pilot contact (see page 10)

IP44 splashproof

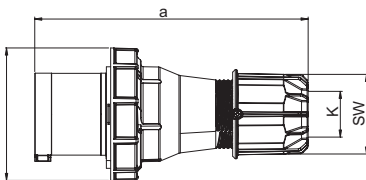


Power Twist Plug IP66/67

	63 Amp		
Poles	3	4	5
a	257	257	257
b	114	114	114
K_cable Ø [mm]	14,5-36	14,5-36	14,5-36
Connection type:	Contact frame with screws		
Wire flexible [mm ²]	6-16		
Contact screws [Ncm]	200 Ncm		
SW	61	61	61
Weight [g]	570	617	666

- contact frame with screws
- housing material: PA6
- contacts: nickel-plated contacts with pilot contact (see page 10)

IP66/67 watertight



Power Twist Plug IP66/67

	125 Amp		
Poles	3	4	5
a	270	270	270
b	131	131	131
K_cable Ø [mm]	22,5-50	22,5-50	22,5-50
Connection type:	Contact frame with screws		
Wire flexible [mm ²]	16-50		
Contact screws [Ncm]	450 Ncm		
SW	81	81	81
Weight [g]	956	1064	1169

- contact frame with hexagon socket screws
- housing material: PA6
- contacts: nickel-plated contacts with pilot contact (see page 10)

IP66/67 watertight

**POWER
TWIST**



■ ■ ■ **Safety**

■ ■ ■ **High impact resistance**

■ ■ ■ **Optimum grip**

■ ■ ■ **Large connection area**

■ ■ ■ **Time saving**

Amp.	Poles	pack. unit	110V~	230V~	400V~	500V~	>50-500V~	>50-500V~	PCE
			50/60Hz 4h	50/60Hz 3p=6h 4p+5p=9h	50/60Hz 3p=9h 4p+5p=6h	50/60Hz 7h	100-300Hz 10h	301-500Hz 2h	
			Cat.No.	Cat.No.	Cat.No.	Cat.No.	Cat.No.	Cat.No.	

63	3	2	0331-4	0331-6	0331-9	0331-7	0331-10	0331-2
63	4	2	0341-4	0341-9	0341-6	0341-7	0341-10	0341-2
63	5	2	0351-4	0351-9	0351-6	0351-7	0351-10	0351-2



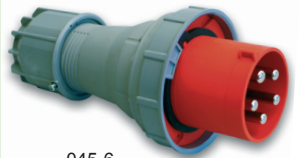
0351-6

63	3	2	033-4	033-6	033-9	033-7	033-10	033-2
63	4	2	034-4	034-9	034-6	034-7	034-10	034-2
63	5	2	035-4	035-9	035-6	035-7	035-10	035-2



035-6

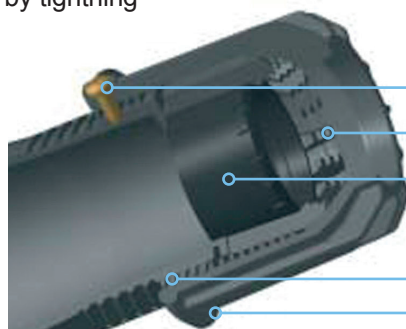
125	3	2	043-4	043-6	043-9	043-7	043-10	043-2
125	4	2	044-4	044-9	044-6	044-7	044-10	044-2
125	5	2	045-4	045-9	045-6	045-7	045-10	045-2



045-6

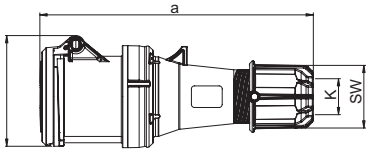
Time saving:

- Simple and fast insertion of the cable
- Strain-relief and sealing of the cable by tightening the cable gland
- All current cables for 63A from $\varnothing 14,5\text{mm}$ to $\varnothing 36\text{mm}$ for 125A from $\varnothing 22,5\text{mm}$ to $\varnothing 50\text{mm}$
- 100% Tightness of the cable



- **Safety screw**
locks the screw cap in position
- **Strain-relief**
for very high strain
- **Sealing**
protection degree IP66/IP67
- **Acme thread**
for high force
- **Cable gland nut**
optimum grip

Connectors

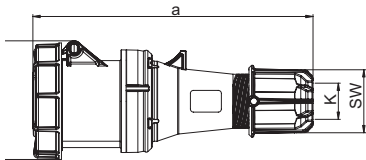


Power Twist Connector IP44

	63 Amp		
Poles	3	4	5
a	269	269	269
b	107	107	107
K_cable Ø [mm]	14,5-36	14,5-36	14,5-36
Connection type:	Contact frame with screws		
Wire flexible [mm ²]	6-16		
Contact screws [Ncm]	200 Ncm		
SW	61	61	61
Weight [g]	624	664	720

- contact frame with screws
- housing material: PA6
- contacts: brass with lamellar contact CuBe
 - to order with pilot contact add a „5“ e.g. 23351-6 (see page 10)
 - to order with pilot contact system (PCS) please add a „6“ e.g. 23361-6 (see page 10)

IP44 splashproof

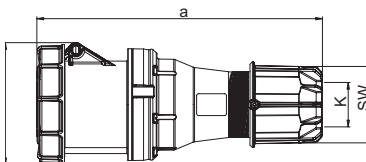


Power Twist Connector IP66/67

	63 Amp		
Pole	3	4	5
a	269	269	269
b	114	114	114
K_cable Ø [mm]	14,5-36	14,5-36	14,5-36
Connection type:	Contact frame with screws		
Wire flexible [mm ²]	6-16		
Contact screws [Ncm]	200 Ncm		
SW	61	61	61
Weight [g]	669	710	768

- contact frame with screws
- housing material: PA6
- contacts: brass with lamellar contact CuBe
 - to order with pilot contact add a „5“ e.g. 2335-6 (see page 10)
 - to order with pilot contact system (PCS) please add a „6“ e.g. 2336-6 (see page 10)

IP66/67 watertight



Power Twist Connector IP66/67

	125 Amp		
Pole	3	4	5
a	287	287	287
b	124	124	124
K_cable Ø [mm]	22,5-50	22,5-50	22,5-50
Connection type:	Contact frame with screws		
Wire flexible [mm ²]	16-50		
Contact screws [Ncm]	450 Ncm		
SW	81	81	81
Weight [g]	1060	1167	1266

- contact frame with screws
- housing material: PA6
- contacts: brass with lamellar contact CuBe
 - to order with pilot contact add a „5“ e.g. 2435-6 (see page 10)
 - to order with pilot contact system (PCS) please add a „6“ e.g. 2436-6 (see page 10)

IP66/67 watertight

**POWER
TWIST**



■ ■ ■ Safety

■ ■ ■ High impact resistance

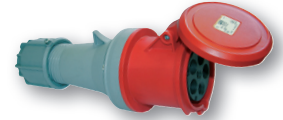
■ ■ ■ Optimum grip

■ ■ ■ Large connection area

■ ■ ■ Time saving

Amp.	Poles	pack. unit	110V~	230V~	400V~	500V~	>50-500V~	>50-500V~	PCE
			50/60Hz 4h	50/60Hz 3p=6h 4p+5p=9h	50/60Hz 3p=9h 4p+5p=6h	50/60Hz 7h	100-300Hz 10h	301-500Hz 2h	
			Cat.No.	Cat.No.	Cat.No.	Cat.No.	Cat.No.	Cat.No.	

63	3	2	2331-4	2331-6	2331-9	2331-7	2331-10	2331-2
63	4	2	2341-4	2341-9	2341-6	2341-7	2341-10	2341-2
63	5	2	2351-4	2351-9	2351-6	2351-7	2351-10	2351-2



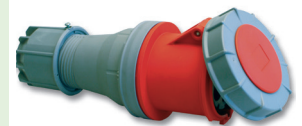
2351-6

63	3	2	233-4	233-6	233-9	233-7	233-10	233-2
63	4	2	234-4	234-9	234-6	234-7	234-10	234-2
63	5	2	235-4	235-9	235-6	235-7	235-10	235-2



235-6

125	3	2	243-4	243-6	243-9	243-7	243-10	243-2
125	4	2	244-4	244-9	244-6	244-7	244-10	244-2
125	5	2	245-4	245-9	245-6	245-7	245-10	245-2



245-6

One contact – for extreme environments

