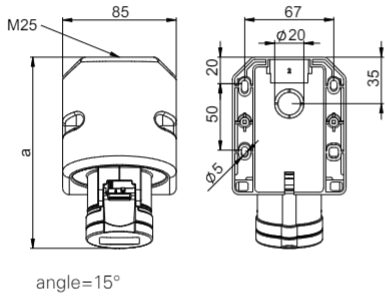


# CEE Wall sockets

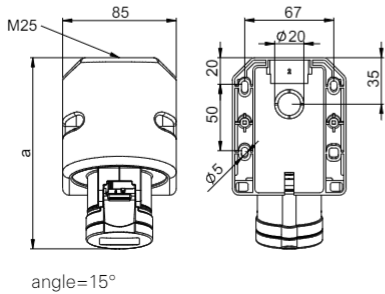


## Wall socket IP44

	16 Amp			32 Amp		
	3	4	5	3	4	5
<b>Poles</b>	3	4	5	3	4	5
<b>a [mm]</b>	142	145	144	155	155	157
<b>Height [mm]</b>	97	98	104	106	106	111
<b>M [mm]</b>	25	25	25	25	25	25
<b>Wire flexible [mm<sup>2</sup>]</b>	1-2,5			2,5-6		
<b>Wire solid [mm<sup>2</sup>]</b>	1-4			2,5-10		
<b>Contact screws [Ncm]</b>	100			110		
<b>Weight [g]</b>	226	240	259	274	291	318

- with screw terminals
- housing material: PA6
- contacts: brass
  - to order nickel-plated contacts please add a "v" e.g. 115-6v
- top and rear entry
- incl. threaded cable grommet

**IP44** splashproof

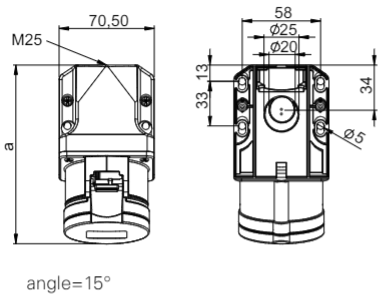


## Wall socket IP44 TT

	16 Amp			32 Amp		
	3	4	5	3	4	5
<b>Poles</b>	3	4	5	3	4	5
<b>a [mm]</b>	142	145	144	155	155	157
<b>Height [mm]</b>	97	98	104	106	106	111
<b>M [mm]</b>	25	25	25	25	25	25
<b>Wire flexible [mm<sup>2</sup>]</b>	1-2,5			2,5-6		
<b>Wire solid [mm<sup>2</sup>]</b>	1-4			2,5-10		
<b>Weight [g]</b>	228	240	264	274	290	319

- screwless connection technology
- housing material: PA6
- contacts: brass
  - to order nickel-plated contacts please add a "v" e.g. 115-6TTv
- top and rear entry
- incl. threaded cable grommet

**IP44** splashproof

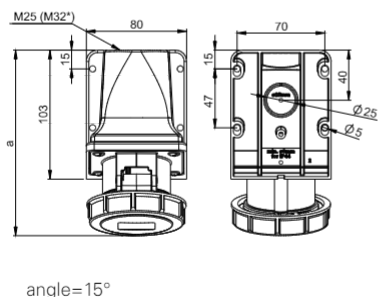


## Wall socket IP44

	16 Amp			32 Amp		
	3	4	5	3	4	5
<b>Poles</b>	3	4	5	3	4	5
<b>a [mm]</b>	132	133	133	145	145	145
<b>Height [mm]</b>	94	97	100	103	103	107
<b>M [mm]</b>	25	25	25	25	25	25
<b>Wire flexible [mm<sup>2</sup>]</b>	1-2,5			2,5-6		
<b>Wire solid [mm<sup>2</sup>]</b>	1-4			2,5-10		
<b>Contact screws [Ncm]</b>	100			110		
<b>Weight [g]</b>	202	214	233	249	365	292

- with screw terminals
- housing material: PA6
- contacts: brass
  - to order nickel-plated contacts please add a "v" e.g. 115-6kv
  - to order Turbo Terminal design (screwless connection technology) please add a „TT“ e.g. 115-6kTT
- top and rear entry
- incl. threaded cable grommet

**IP44** splashproof



## Wall socket IP67

	16 Amp			32 Amp		
	3	4	5	3	4	5
<b>Poles</b>	3	4	5	3	4	5
<b>a [mm]</b>	146	148	148	161	161	163
<b>Height [mm]</b>	96	99	102	108	108	112
<b>M* [mm]</b>	25	25	25	25	25	25
<b>Wire flexible [mm<sup>2</sup>]</b>	1-2,5			2,5-6		
<b>Wire solid [mm<sup>2</sup>]</b>	1-4			2,5-10		
<b>Contact screws [Ncm]</b>	100			110		
<b>Weight [g]</b>	226	241	275	298	314	351

- with screw terminals
- housing material: PA6
- contacts: brass
  - to order nickel-plated contacts please add a "v" e.g. 1152-6v
  - to order Turbo Terminal design (screwless connection technology) please add a „TT“ e.g. 1152-6TT
- top and rear entry
- incl. threaded bung

**IP67** watertight

\*M32 optional on request available

